

Installing Windows instance with virtio drivers

Brian Candler
Network Startup Resource Center
brian@nsrc.org



These materials are licensed under the Creative Commons Attribution-NonCommercial 4.0 International license
(<http://creativecommons.org/licenses/by-nc/4.0/>)

1. Create the instance

```
gnt-instance add -t plain -n host1.ws.nsrc.org \  
-s 20G -o image+cd --no-name-check --no-ip-check \  
--no-start windows1
```

```
Tue May 20 10:58:00 2014 * disk 0, size 20.0G  
Tue May 20 10:58:00 2014 * creating instance disks  
Tue May 20 10:58:00 2014 adding instance windows1 t  
Tue May 20 10:58:01 2014 - INFO: Waiting for insta  
Tue May 20 10:58:01 2014 - INFO: Instance windows1  
Tue May 20 10:58:01 2014 * running the instance OS
```

2. Update settings

```
gnt-instance modify -H cdrom_disk_type=ide windows1
```

```
Modified instance windows1
```

```
- hv/cdrom_disk_type -> ide
```

```
Please don't forget that most parameters take  
effect only at the next (re)start
```

```
gnt-instance modify -B minmem=1G,maxmem=2G,vcpus=2  
windows1
```

```
gnt-instance modify --net 0:link=br-lan windows1
```

3. Start with ISOs attached

```
gnt-instance start \  
-H cdrom_image_path=/iso/WIN_EN_DVD.iso,\  
cdrom2_image_path=/iso/virtio-win-0.1-74.iso,\  
boot_order=cdrom windows1
```

4. Attach console

```
gnt-instance list -o name,pnode,network_port
```

```
Instance Primary_node      Network_port  
windows1 host1.ws.nsrc.org 11009
```

```
vncviewer host1.ws.nsrc.org:11009
```



Windows Server 2008 R2

Install now

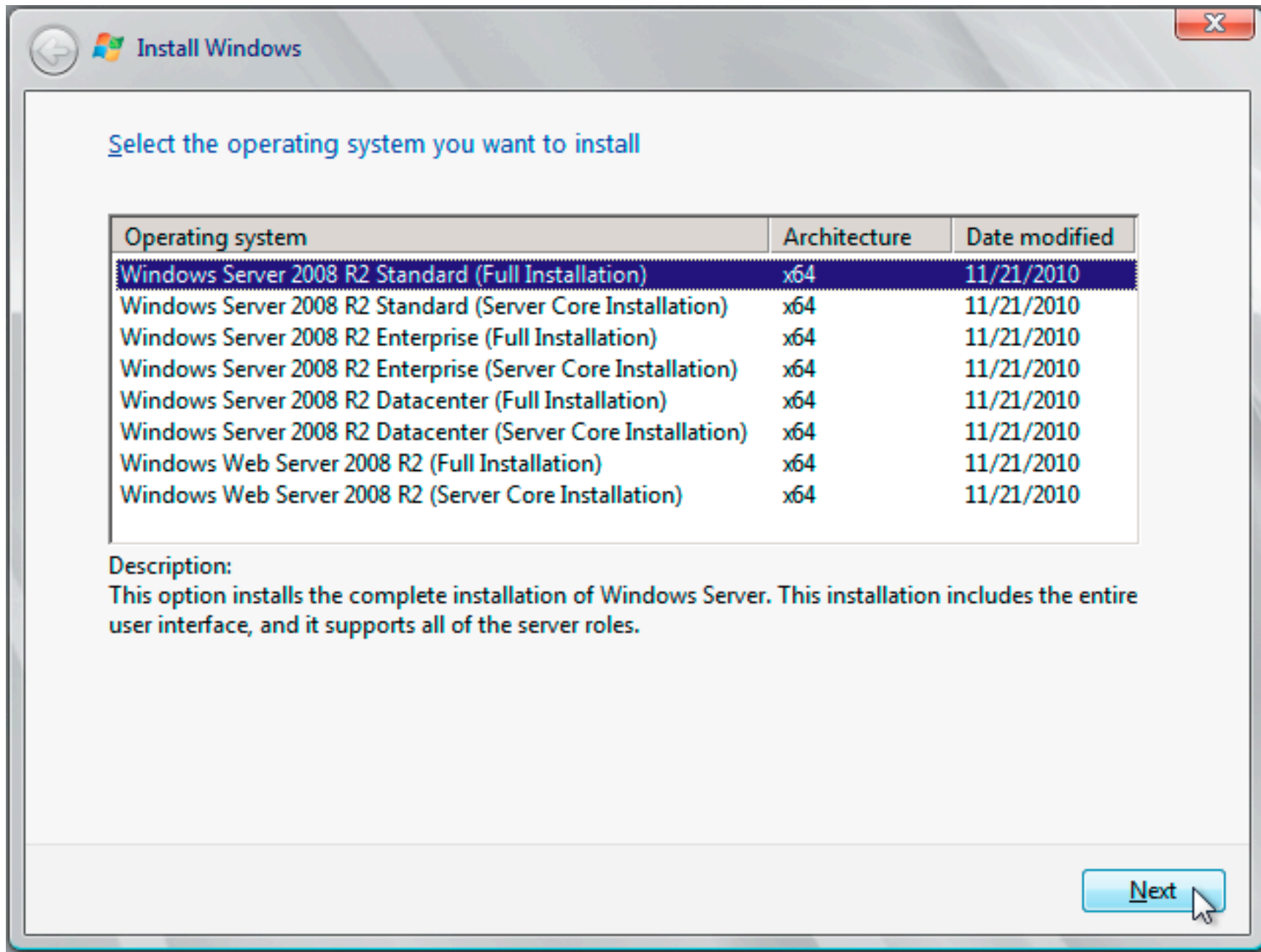


What to know before installing Windows

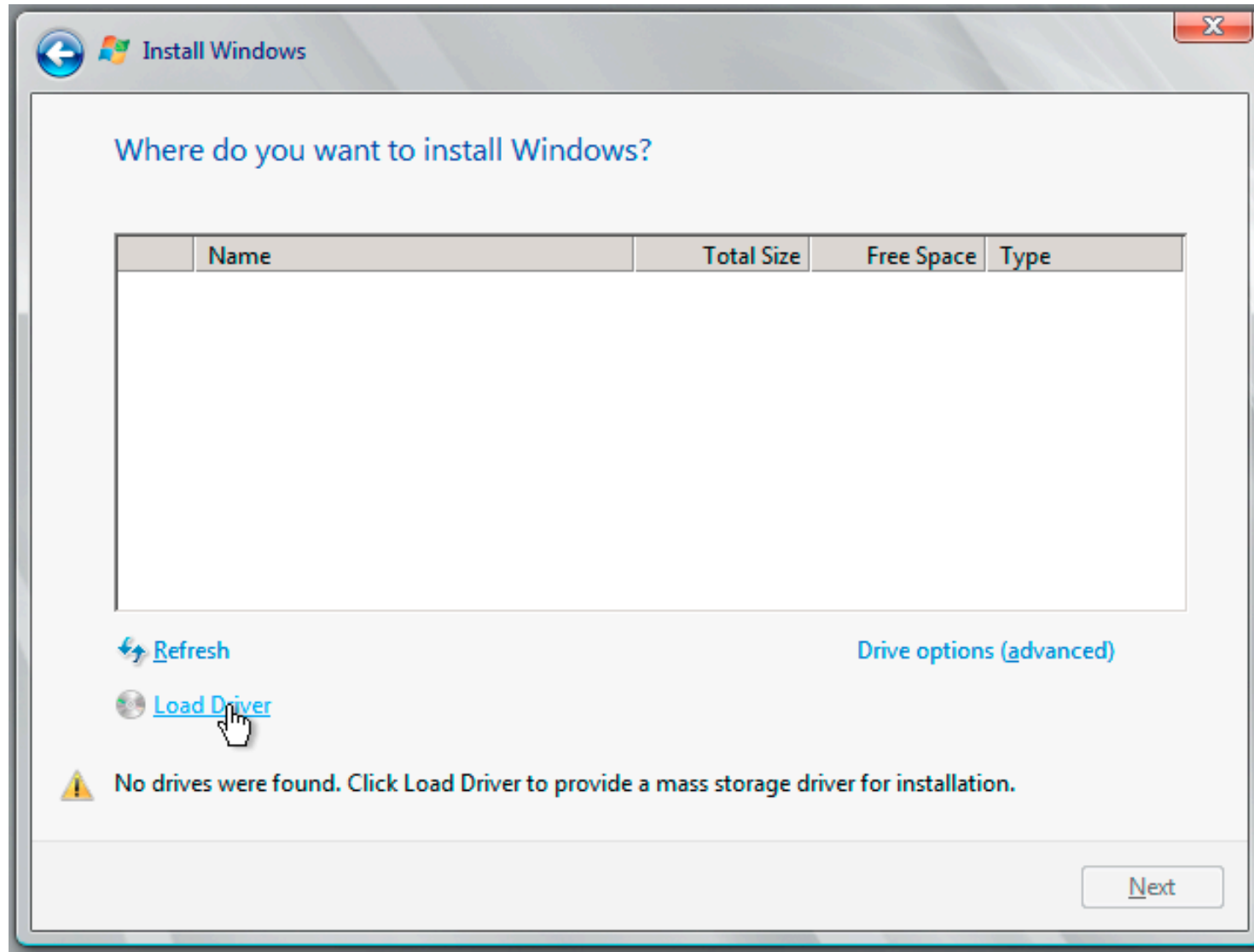
Repair your computer

Copyright © 2009 Microsoft Corporation. All rights reserved.

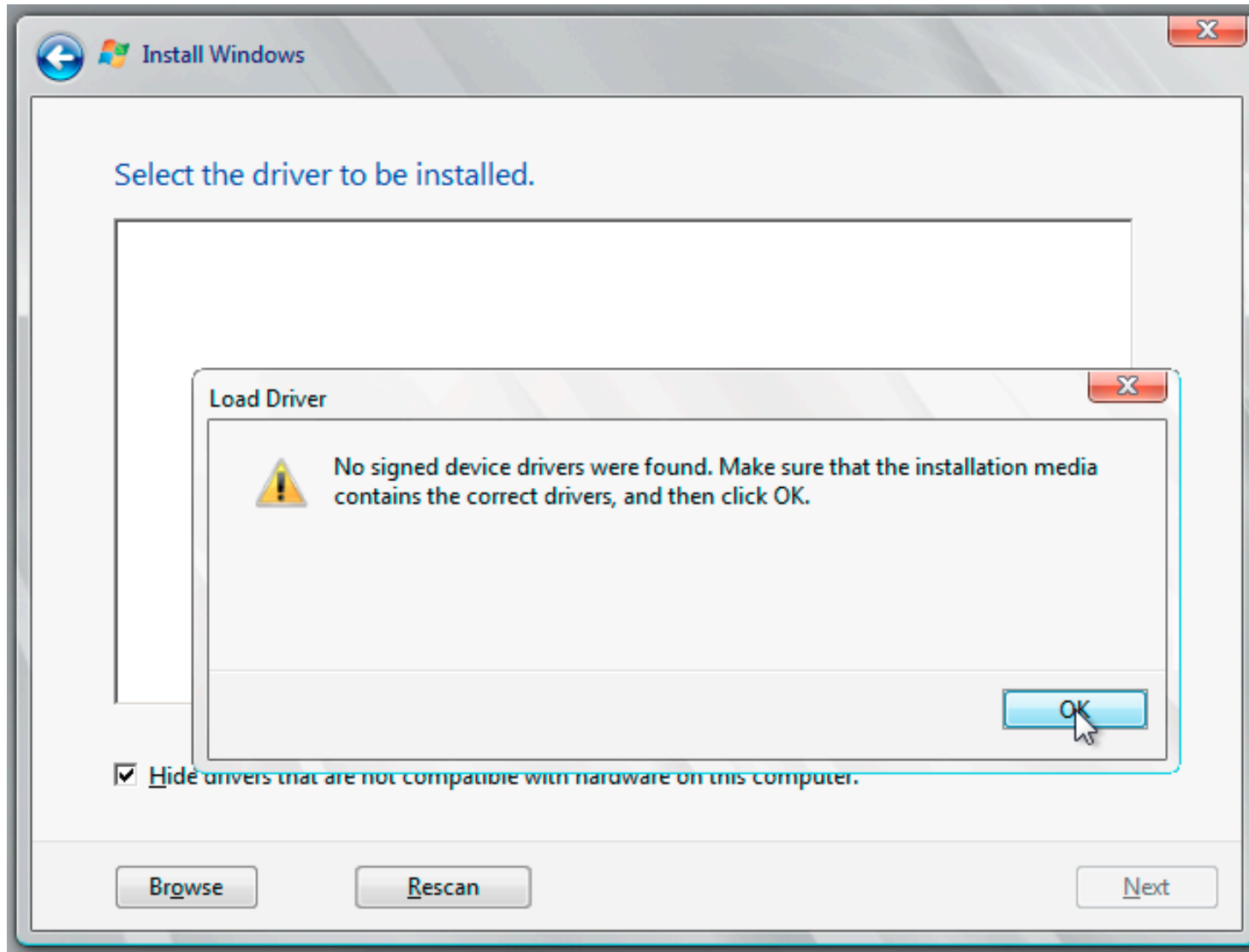




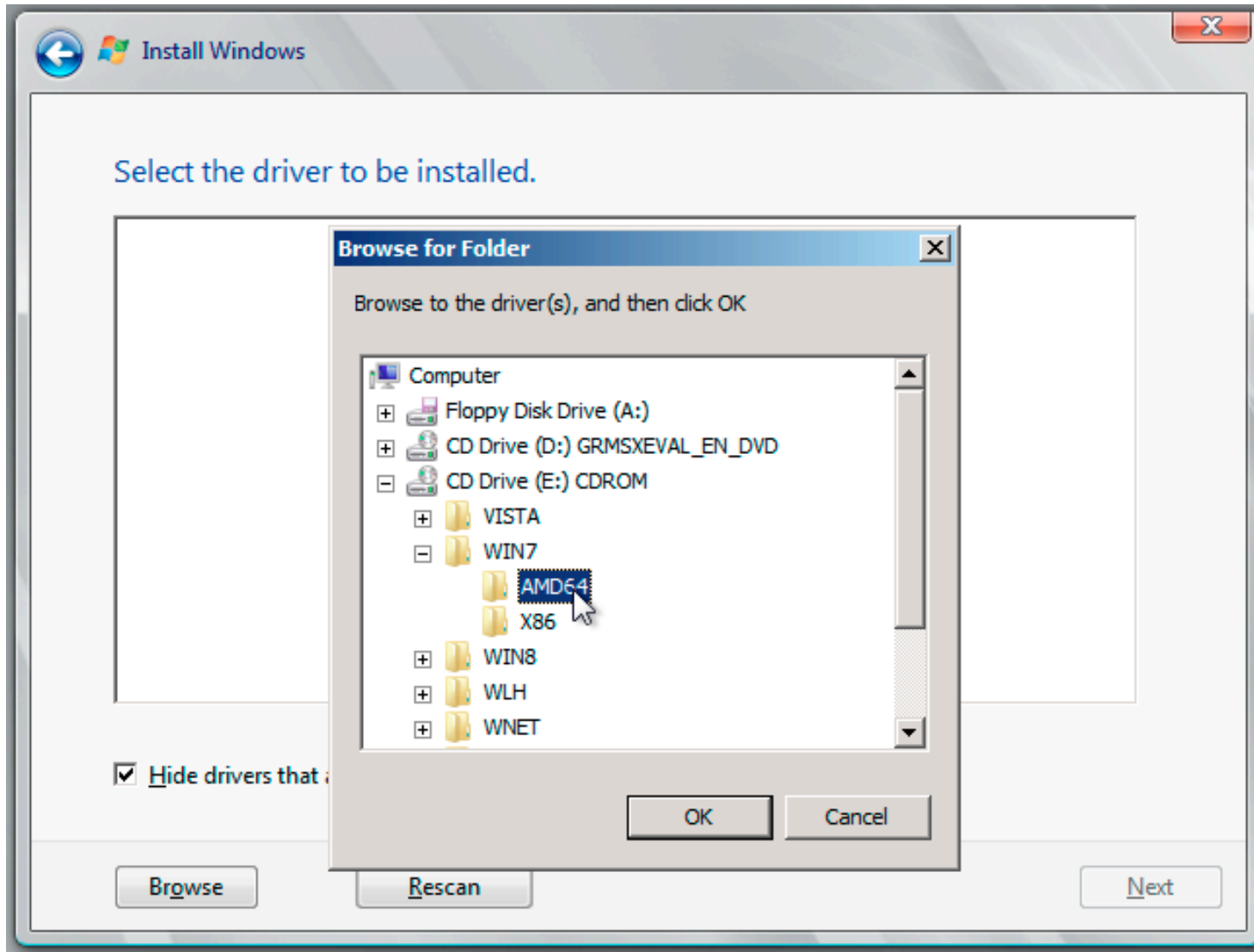
Click "Load Driver"



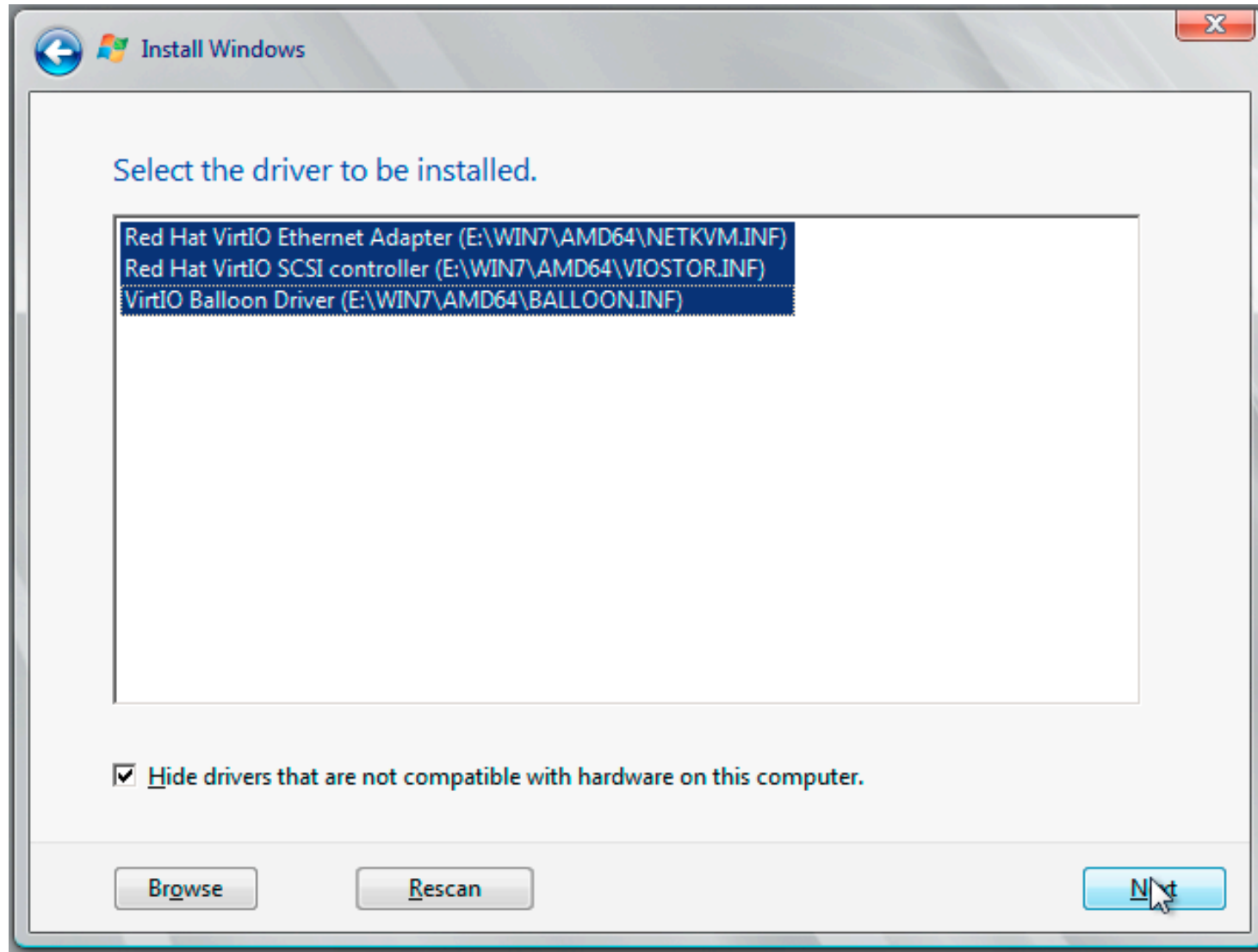
Click "OK" and "Browse"



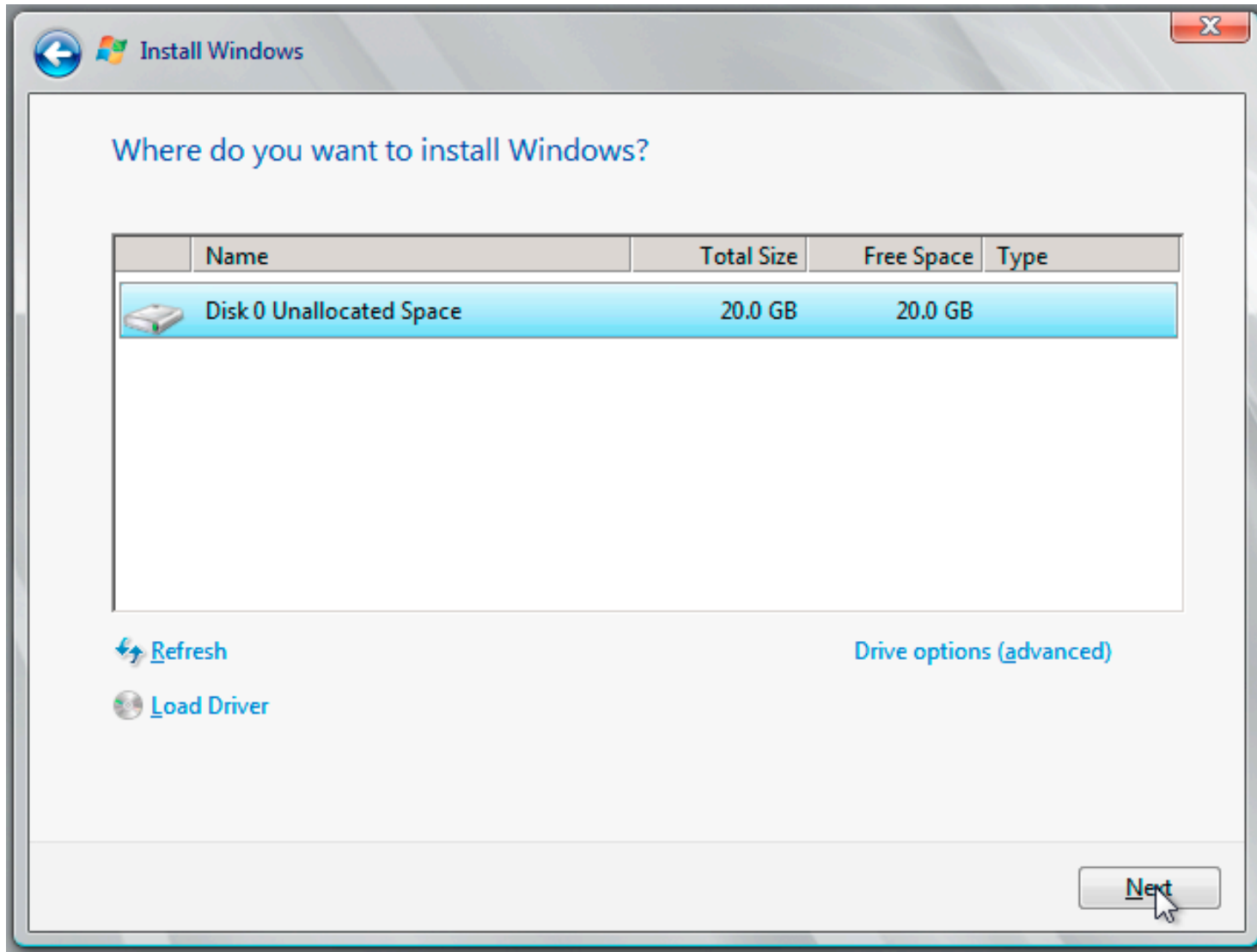
Browse to E: WIN7 AMD64



Select all three drivers and "Next"



Can now install onto virtual disk!



Complete installation as normal

