

THAIREN UPDATE

Software Defined Network Testbed in ThaiREN

Software Defined Network Testbed in ThaiREN

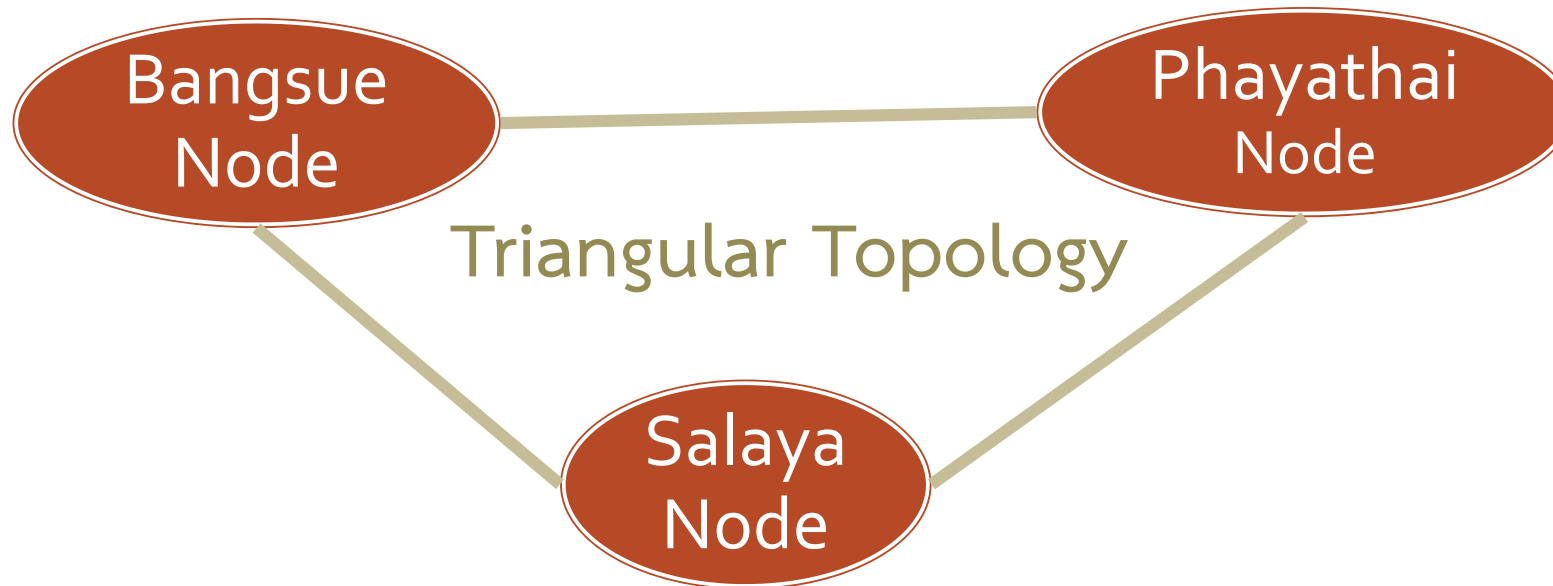
- Training: Openflow's Tutorial Workshop
 - 4 Times:
- Experiments Plan:
 - A set of core nodes in the center of the UniNet are selected. The 1 Gbps NetFPGA cards are installed in the triangular topology.

Plan deployed SDN in ThaiREN

We plan to experiment with software defined network concept based on Openflow. A set of core nodes in the center of the UniNet are selected. The aims of this testbed are to provide an express links between these sites.

Plan of Software Defined Network in ThaiREN

- A set of core nodes in the center of the UniNet are selected. The 1 Gbps NetFPGA cards are installed in the triangular topology. The aims of this testbed are to provide an express links between these sites.



UniNet: Hardware for OpenFlow Project

Dell PowerEdge R710
Processor : 2
Core : 8
RAM : 192GB



Server Monitoring



UniNet Network

NetFPGA 1G (4x1G)



Current of Hardwares for OpenFlow Project

Hardware	Numbers
Dell Server R710	80 Servers
NetFPGA 1G Card	10 Cards

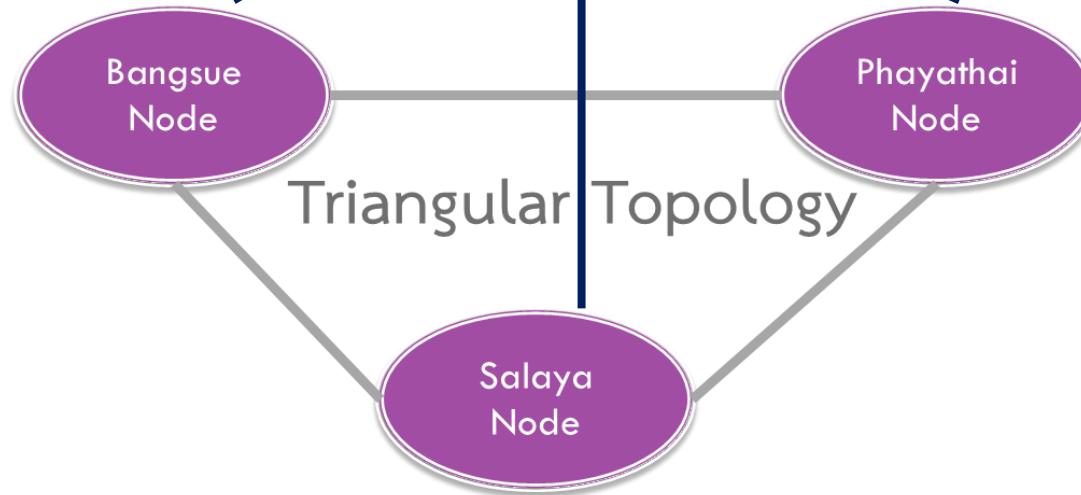
SDN-Network Diagram Concept

Control plane

Controller
at Phayathai Node

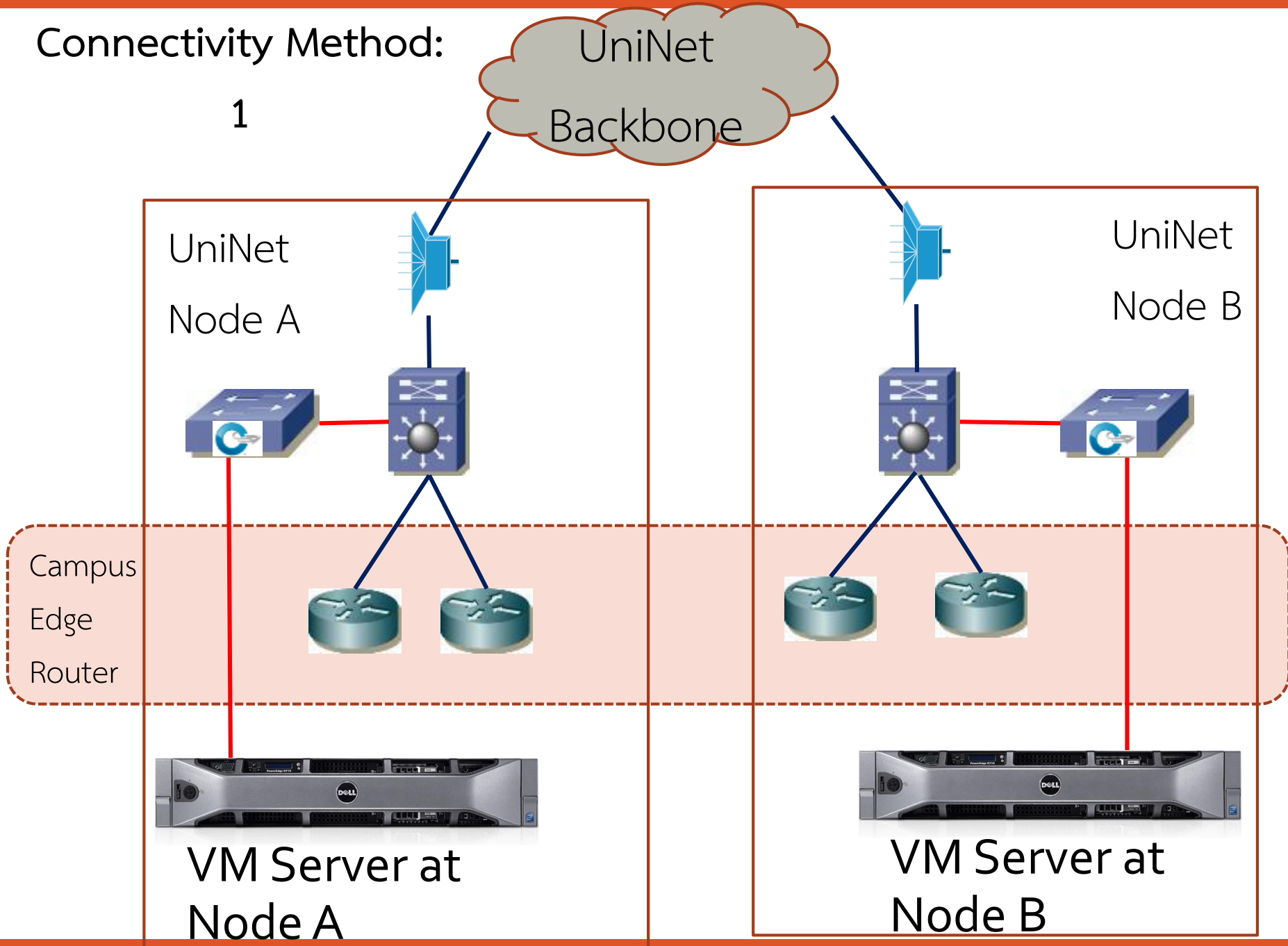


Data plane



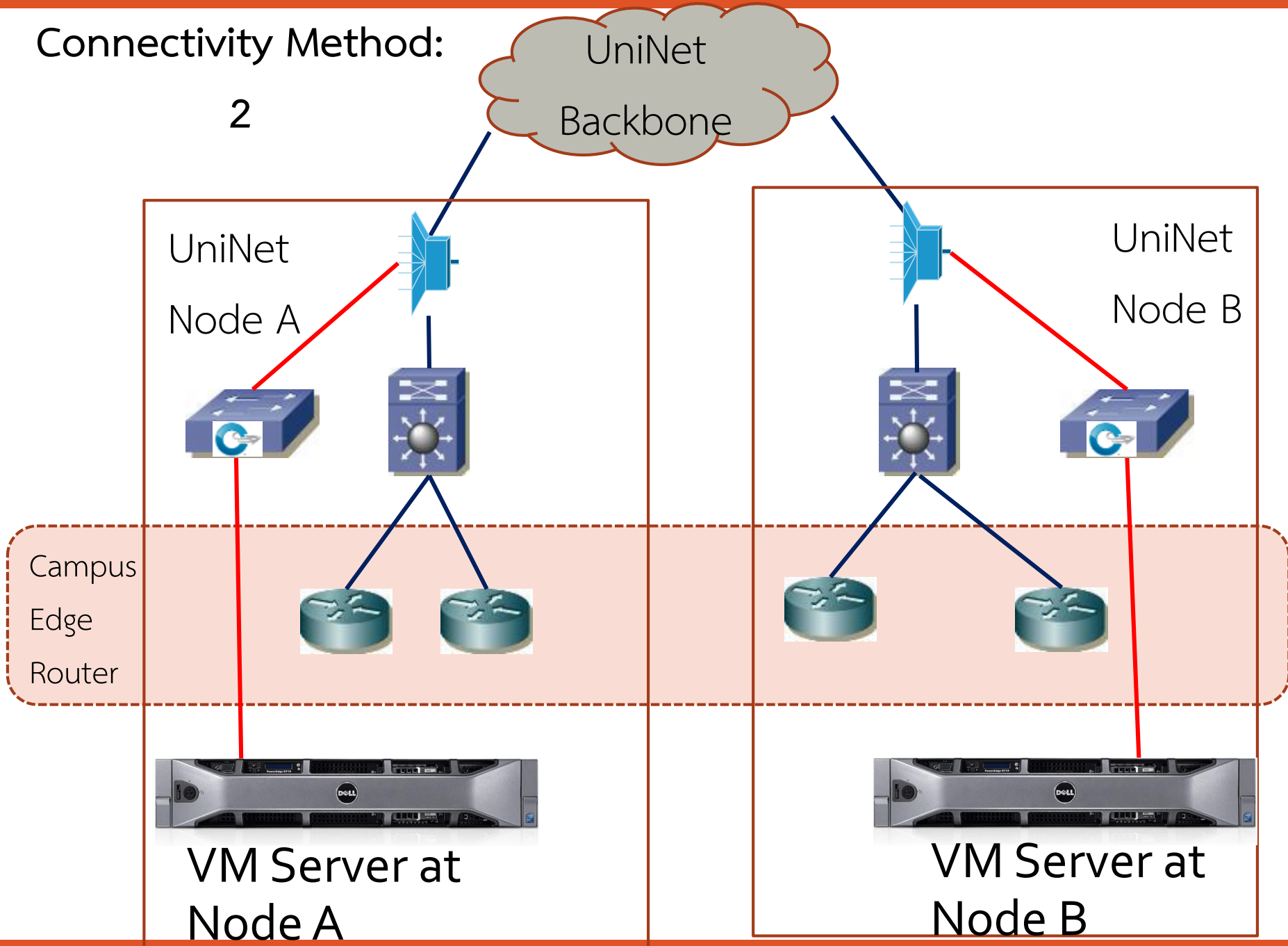
Connectivity Method:

1



Connectivity Method:

2



Connectivity Method:

3

