

4-3-3

scp & sftp

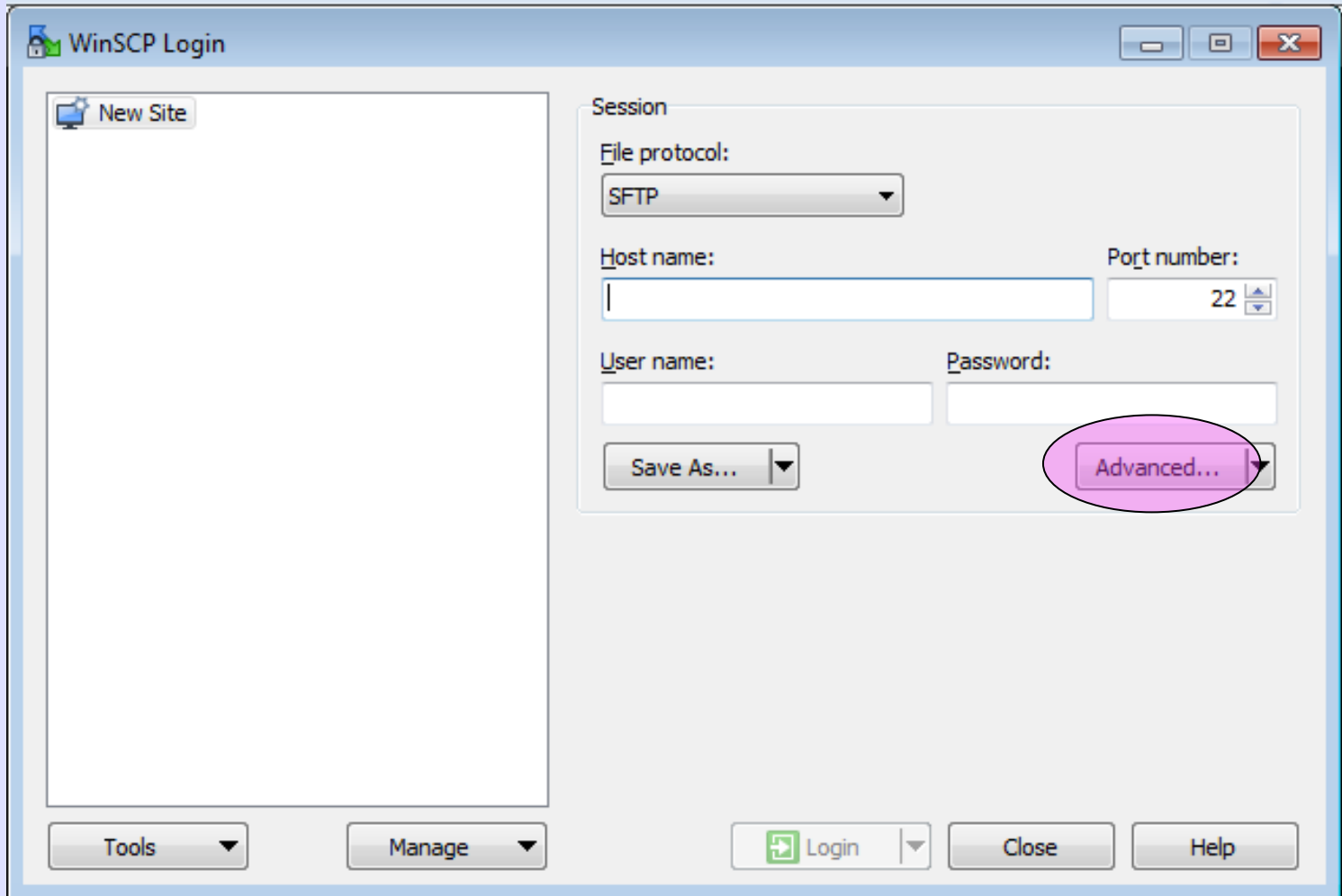
# Get Software

<http://winscp.net/eng/download.php>

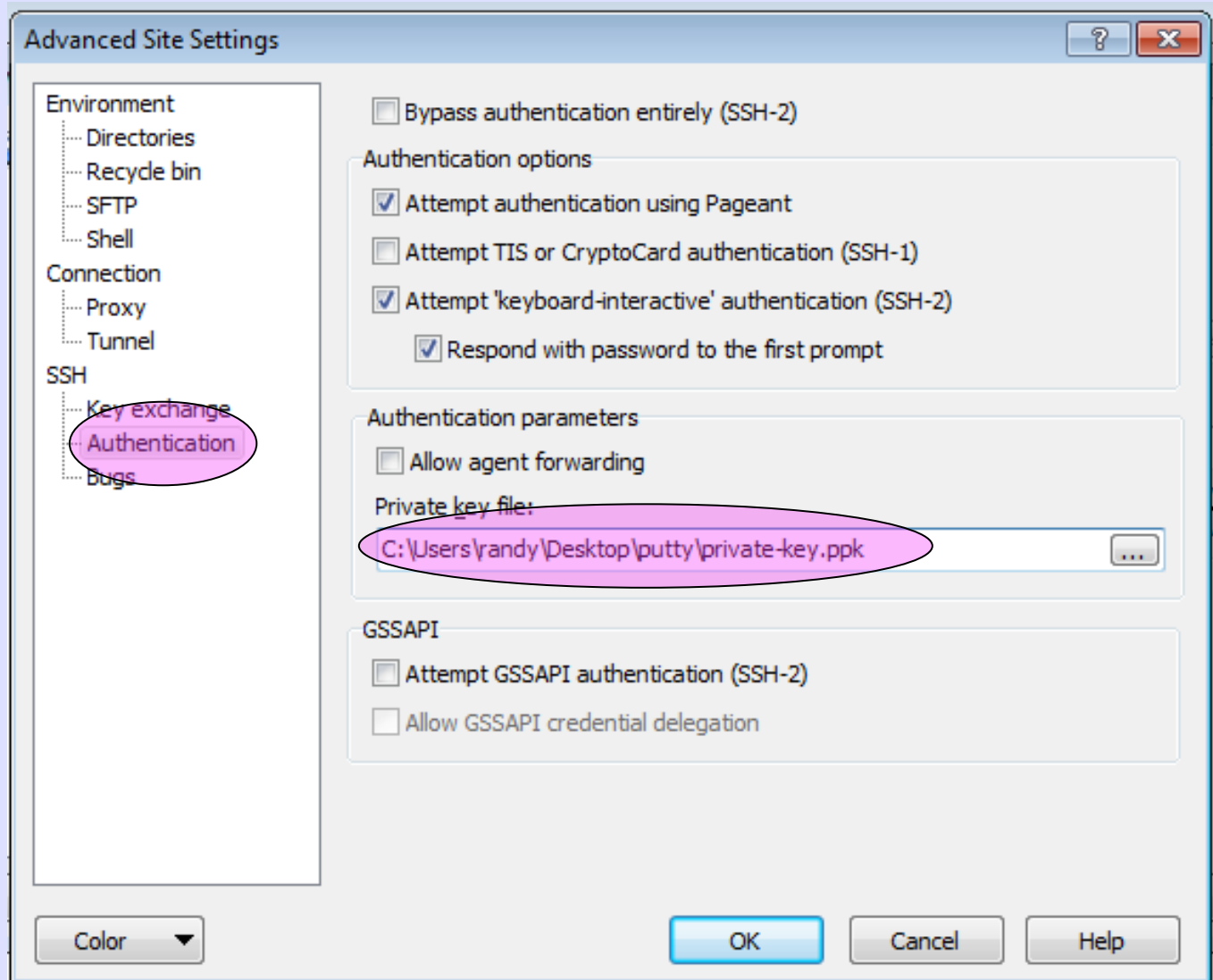
**Get WinSCP 5.5**

**Do Not install Google Chrome**

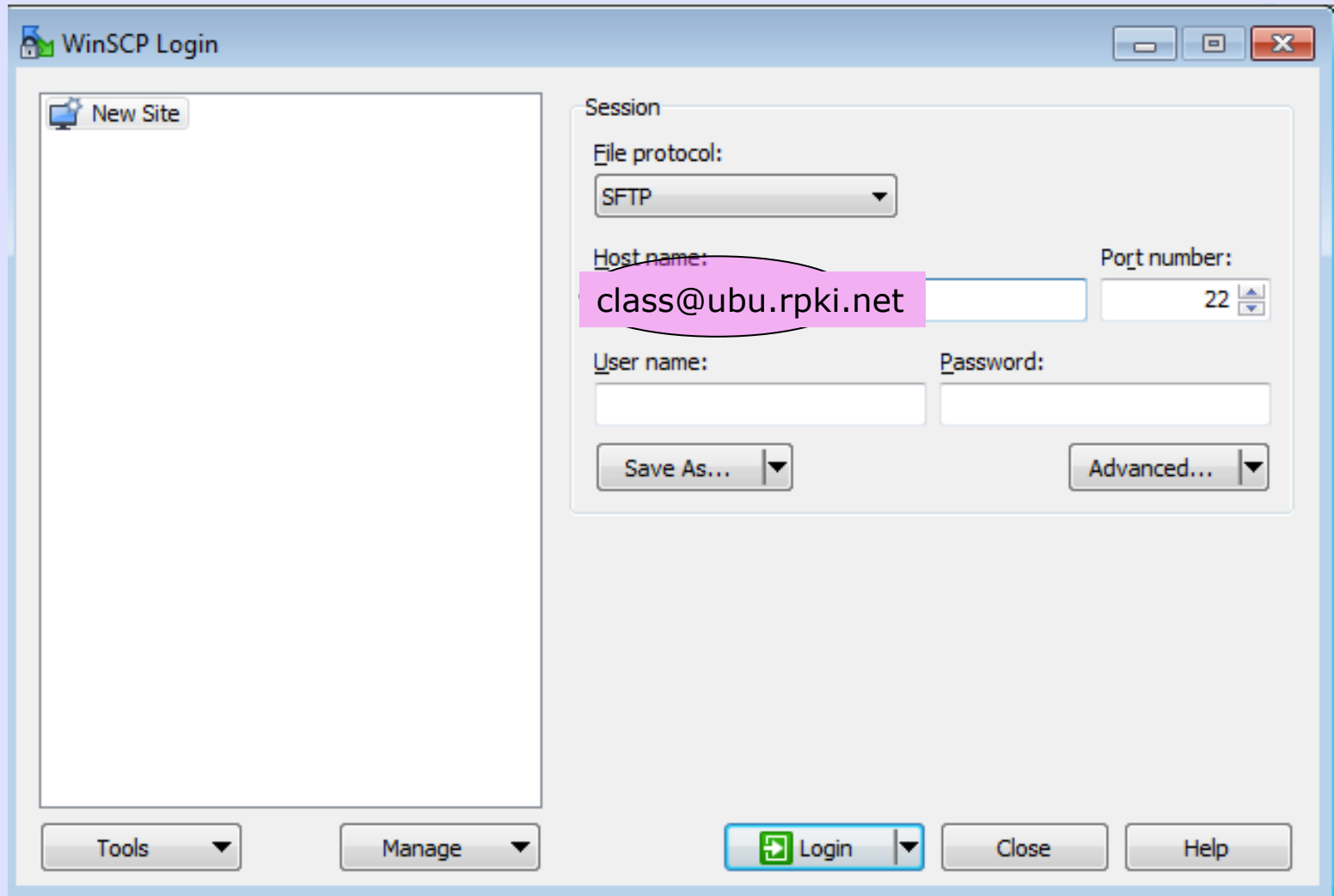
# Start WinSCP



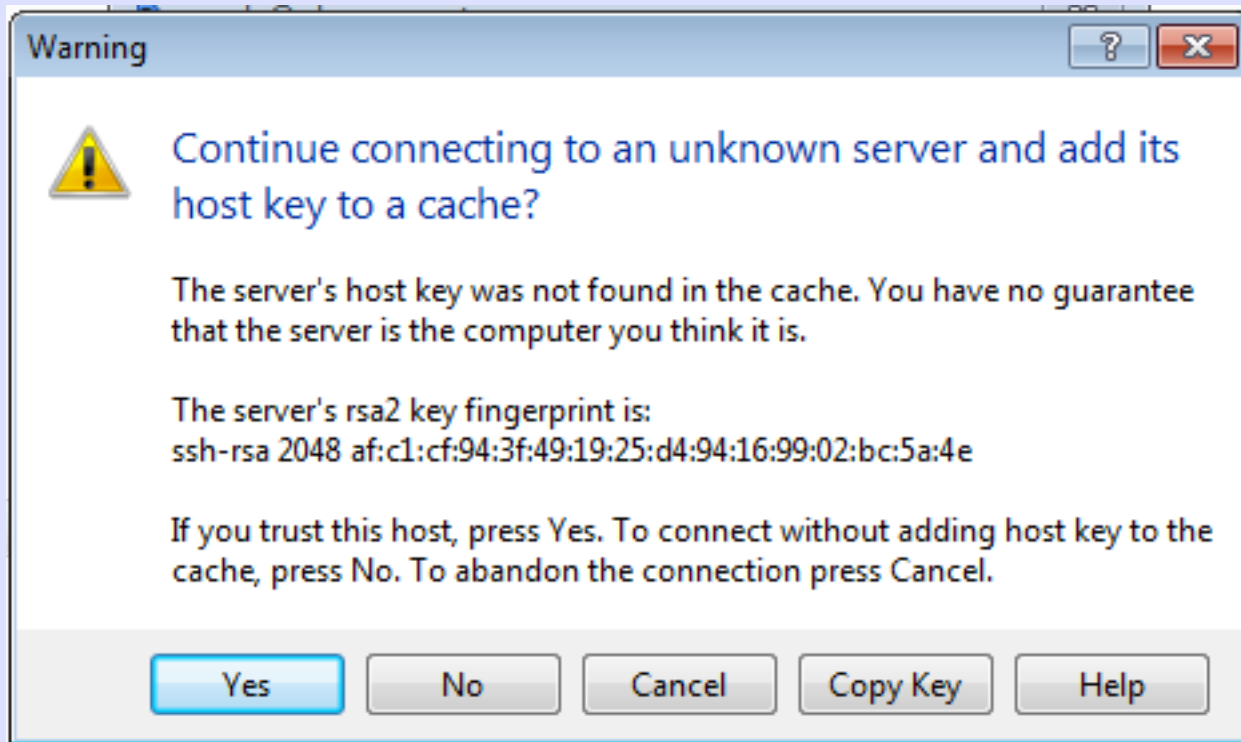
# Load Private Key



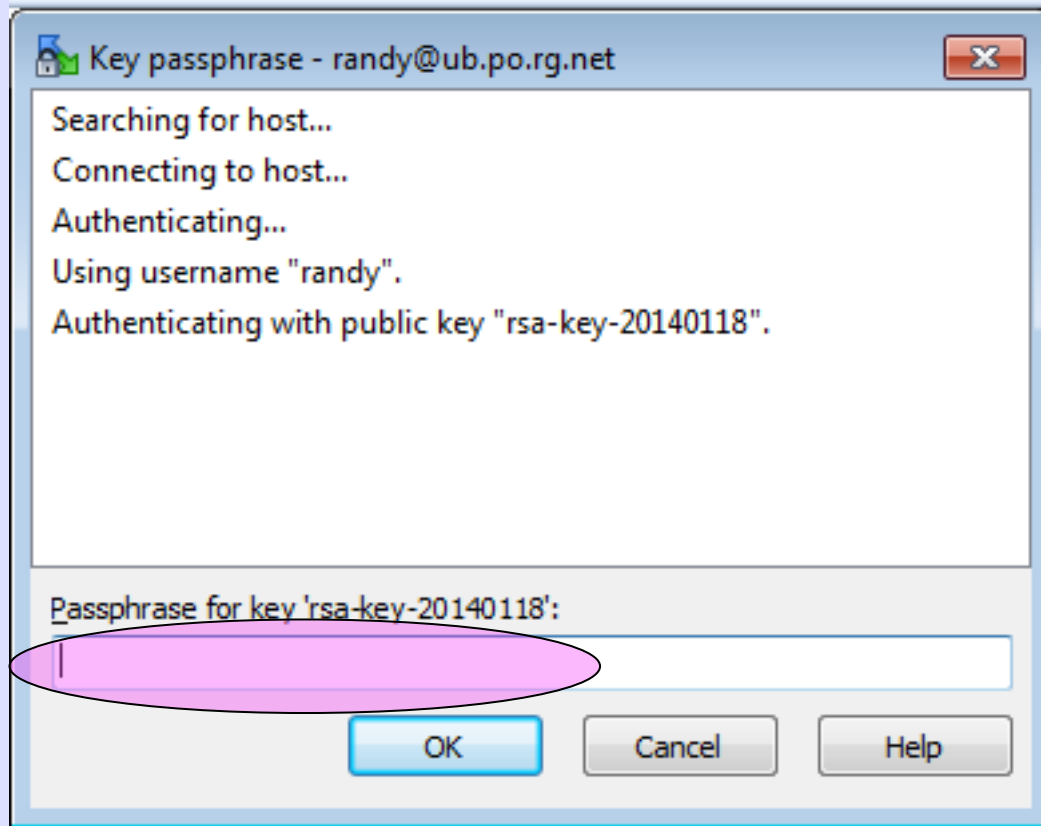
# Log On To Server



# Accept Host's Key



# Passphrase of Private Key



# You Are In!

The screenshot shows the WinSCP interface with two panels. The left panel displays the local file system at `C:\Users\randy\Documents`, and the right panel displays the remote file system at `/home/randyc`. Both panels show a list of files and folders with columns for Name, Ext, Size, Type, and Changed. The local host is labeled "Local Host" and the remote host is labeled "Remote Host".

Name	Ext	Size	Type	Changed
			Parent directory	12/09/2013 19:29:17
My Music			File folder	28/12/2010 02:42:24
My Pictures			File folder	28/12/2010 02:42:24
My Videos			File folder	28/12/2010 02:42:24
desktop.ini		402 B	Configuration sett...	12/09/2013 19:29:17

Name	Ext	Size	Changed	Rights	Owner
..			18/01/14 21:39:55	rw-r-xr-x	root
.cache			18/01/14 21:53:44	rw-x-----	randy
.ssh			18/01/14 21:46:00	rw-x-----	randy
.bash_logout		220 B	18/01/14 21:39:55	rw-r--r--	randy
.bashrc		3,486 B	18/01/14 21:39:55	rw-r--r--	randy
.profile		675 B	18/01/14 21:39:55	rw-r--r--	randy

0 B of 402 B in 0 of 4

0 B of 4,381 B in 0 of 5

SFTP-3 0:00:18

Local  
Host

Remote  
Host